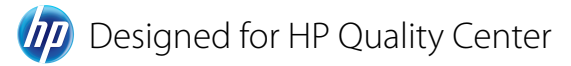




QC Workflow Accelerator

Workflow without programming



Leverage the power of HP Quality Center through enhanced workflow

QC Workflow Accelerator benefits

Genilogix's QC Workflow Accelerator provides a user interface extension to the built-in capabilities of HP Quality Center's workflow to allow users to configure and manage:

- Multi-step approvals
- Fields
- State transition rules
- Conditional security
- Actions

Configurations defined with the QC Workflow Accelerator are saved in XML format directly in your projects. These are easily migrated from project to project in HP Quality Center Enterprise or can be embedded in template projects in HP Quality Center Premier.

"With the QC Workflow Accelerator, customers can reduce month's worth of workflow customization effort into days! Transform customization into configuration at a fraction of the cost!"

The business challenge

As HP Quality Center features and functionality continue to evolve, users often find themselves trying to sort through all the new enhancements not to mention figuring out how to take advantage of the robust functionality. Typically companies either do not take full advantage of the workflow capabilities to unleash these advanced features or they employ expensive developer resources and implement volumes of code that cause a maintenance nightmare down the road.

Expanding on the industry leading Quality Center platform, the QC Workflow Accelerator allows customers to take advantage of powerful workflow customization capabilities through an extended User Interface. Customers can now eliminate complex and error prone custom code and replace with a simplified set of configurations.

QC Workflow Accelerator improves the experience of QC owners by:

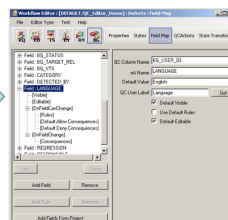
- Transforming QC customization into configuration
- Simplifying upgrade path to new versions of Quality Center
 - Eliminates error prone and tedious workflow code
 - No longer need experienced developers to customize QC
 - Less custom code to maintain
- Lowering total cost of ownership

QC Workflow Accelerator transforms customization to configuration.

Before (customization)

```
Sub AddDefect_SetDefaultValues
Fields("BG_USER_04").Value = "N"
Fields("BG_PROJECT").Value = "Mercury Tours Web Site"
Fields("BG_USER_03").Value = "English"
If the user Is in Developer group, set Assigned To field value
to current user by default
If User.IsInGroup("Developer") Then
Fields("BG_RESPONSIBLE").Value = User.UserName
End If
End Sub
```

After (configuration)



Configuration vs. customization

Quality Center projects can be configured and customized in a number of ways.

Quality Center Configuration consists of defining Project Groups, Project Entities (User Defined Fields), Project Lists, Module Access, Requirement Types, Risk-Based Quality Management, Automail and Alerts.

Quality Center Customization consists of developing Microsoft VBScript code through the native QC Workflow Script Editor to customize such functions as the actions that Quality Center users can perform, the fields that are available to users, user-defined procedures, and toolbar buttons.

The QC Customization section that governs Quality Center *behavior* is the **Workflow** area under Project Customization. QC provides a Script Editor interface where programmers can develop VBScript code to control a user session and project behavior.

The Genilogix QC Workflow Accelerator, in effect, replaces QC's Workflow Script Editor.

What is the Genilogix QC Workflow Accelerator?

The Genilogix QC Workflow Accelerator is an application for controlling Quality Center project behavior without programming. The QC Workflow Accelerator consists of 3 components: Workflow Editor, Rules Configuration file and Rules Engine.

- **Workflow Editor** - the Editor interface is used to define rules that govern project behavior and save the rule set in a QC Workflow Accelerator enabled project.
- **Rules Configuration** – rules defined by the by the Workflow Editor are stored in the project database common settings table in XML format
- **Rules Engine** - the Rules Engine reads and executes the rules defined in the configuration file and controls Quality Center according to the rules saved in the project.

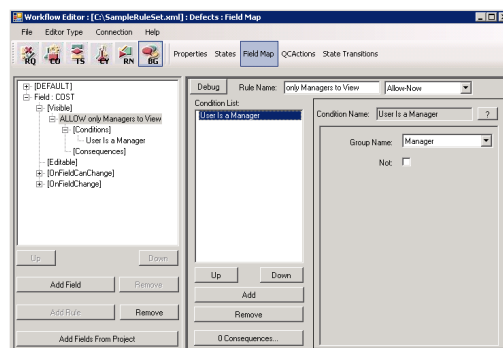
System requirements

- HP Quality Center 10.00
- Microsoft .NET Framework Version 3.5 (client)

The QC Workflow Editor is used to apply configurations as opposed to customizing QC workflow code.

For example, without the Genilogix Workflow Editor, to restrict viewing a **Cost** field to the **Manager** group, a programmer must write, debug and maintain code in QC's Workflow Script Editor. With the Genilogix QC Workflow Editor, anyone can modify the **Cost** field's *Visible* property and create a **Rule** called "Allow Managers" with a **Condition** that reads 'User is a Manager'. Operations to create the rule are performed by selecting items from a pick list. No programming knowledge is required.

Restrict viewing a **Cost** field to the **Manager** group



How the Rules Work

The Genilogix QC Workflow Accelerator and Editor provide controlled QC project behavior by implementing logic. This logic is specified in the editor in the form of **Rules**. Rules have a name and one or more **Conditions** and **Consequences**.

Rules can be triggered or "fired" when various user operations occur in Quality Center. For example, when a user clicks the Run button to run a Test, if there are Rules associated with the button click operation, they are evaluated and the operation is either **Allowed** or **Denied** based on whether conditions are met. Additional operations can occur, depending on the rule's Consequences. For example, if the user is not a member of an allowed group, a Consequence can display a message stating "You must be a member of the 'Tester' group to execute a test."

Why use the Genilogix QC Workflow Accelerator?

There are many reasons to use the Genilogix QC Workflow Accelerator, all translating to increased efficiency and quality, and reduced costs.

In particular, three of the most significant reasons to use the Genilogix QC Workflow Accelerator are:

- Ease of Use
- Dependability
- Reusability

The QC Workflow Accelerator is easy to use since programming skills are not required. Anyone can learn how to configure rules in the editor.

The QC Workflow Accelerator is more dependable than one or more inconsistent programmer implementations since the underlying software has already been tested and is in production at companies around the world.

The QC Workflow Accelerator, by definition, has reusability built in. For example, when rules are set up to restrict operations by Group, the same underlying software techniques are reused. This prevents programmers from developing varying, error prone techniques to perform the same operations in different QC modules or projects.

Combine the QC Workflow Accelerator with *Quality Center Premier* and administrative costs are dramatically reduced.

About Genilogix

Genilogix is an established technology company that optimizes quality, performance, and availability in business applications. As an HP Platinum Business Partner, Genilogix provides a range of products and services to help customers better leverage the benefits of the HP business technology optimization (BTO) product line. Together, Genilogix and HP offer innovative products and services that bring quality management together with automated testing, test management, and performance monitoring. Certified product integrations such as Genilogix QC eApprove, Genilogix QC Mobile, and Genilogix QC vLab distinguish Genilogix as a unique value added reseller. Genilogix also offers HP-certified training and HP-authorized support for the BTO product line. HP overall and HP Enterprise Services in particular leverage Genilogix as a global subcontractor.

To get QC Workflow Accelerator, or for additional information, call: +1 (800) 780-5110

www.genilogix.com



Genilogix LLC
3846 South Water Street
Pittsburgh, PA 15203 USA

+1 (800) 780-5110
www.genilogix.com